



SOLAR SOLVE MARINE

ENQUIRY FOR SUNSCREENS / BLINDS

Tel: +44 (0) 191 454 8595 Fax: +44 (0) 191 454 8692 E-mail: info@solasolv.com Web: www.solasolv.com / www.rolasolv.com

Customer Name: Project:

Customer Ref: Date: QUOTE ORDER

Please indicate in column two which type of sunscreen/blind is required.

SOLASAFE™
(SS) - FILM SUNSCREEN
INSIDE AN
ALUMINIUM CASSETTE

SOLAROLA™
(SR) - FILM SUNSCREEN
WITHOUT AN
ALUMINIUM CASSETTE

CASSLITE™
(CL) - FABRIC ROLLER BLIND
INSIDE AN
ALUMINIUM CASSETTE

DIMMLITE™
(DL) - FABRIC ROLLER
BLIND WITHOUT AN
ALUMINIUM CASSETTE

LITETITE™
(LT) BLACKOUT FABRIC ROLLER BLIND INSIDE AN ALUMINIUM CASSETTE WITH SIDE GUIDE CHANNELS

SMOKETITE™
(ST) SMOKE OBSTRUCTING ROLLER SCREEN INSIDE AN ALUMINIUM CASSETTE WITH SIDE GUIDE CHANNELS AND WITH FLAME RETARDANT FABRIC

VARYSTOP™
(VS) - FABRIC ROLLER BLIND INSIDE AN ALUMINIUM CASSETTE WITH SIDE GUIDE CHANNELS. IT CAN STOP IN ANY POSITION

ALWAYS USE A METAL MEASURING TAPE. ALL BLINDS/SCREENS ARE MADE ACCORDING TO THE INFORMATION AND MEASUREMENTS SUPPLIED. THE MANUFACTURER CANNOT BE HELD RESPONSIBLE FOR INCORRECT INFORMATION GIVEN BY A CUSTOMER.

PLEASE NOTE: THE COLUMNS IN THE TABLE CORRESPOND TO THE ILLUSTRATIONS OVERLEAF.

ITEM REF	SCREEN /BLIND TYPE <i>e.g. SS</i>	SHAPE 1	FIXING BRACKET TYPE 2	ROLLER OPERATING MECHANISM 3	WIDTH 'CW' or 'PW' 4	BOTTOM RAIL WIDTH 4 'BR'	DROP 'RD' 4	INSIDE / OUTSIDE RECESS 4	FILM OR FABRIC COLOUR 5	CABLE SUP-PORT 6	SIDE GUIDE CHAN-NELS 7	REMARKS or REFERENCE	QTY

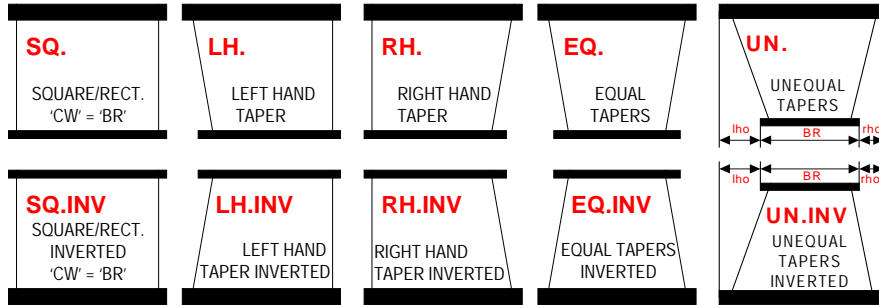
TO ENSURE A PROMPT AND ACCURATE REPLY TO YOUR ENQUIRY, PLEASE COMPLETE ALL OF THE COLUMNS AND ADD ANY REMARKS WHICH MAY BE USEFUL THEN FAX IT TO: +44 191 454 8692

REF: orderquote3p33a

PRODUCT TECHNICAL INFORMATION

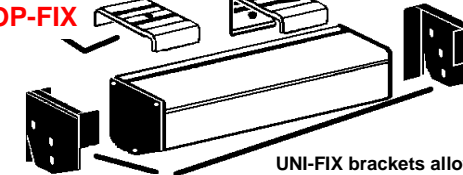
1 SCREEN SHAPES

IMPORTANT NOTE
Unequal tapered screens. Either the left hand offset (lho) or the right hand offset (rho) as well as the bottom rail width (BR) must be supplied.



FIXING BRACKET

1) TOP-FIX



2) SIDE-FIX

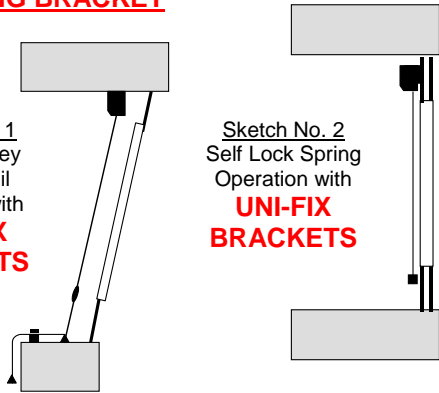
3) UNI-FIX or FACE-FIX

CODE	
1)	TF
2)	SF
3)	UF

UNI-FIX brackets allow the blind/screen to be TOP-FIXED or FACE-FIXED. If you are unsure of which brackets to use, choose these
We also suggest UNI-FIX brackets for inverted screen installations

2 FIXING BRACKET

Sketch No. 1
Double Pulley
Bottom Rail
Operation with
**TOP-FIX
BRACKETS**

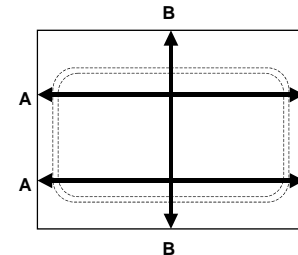


Sketch No. 2
Self Lock Spring
Operation with
**UNI-FIX
BRACKETS**

ROLLER OPERATING MECHANISMS

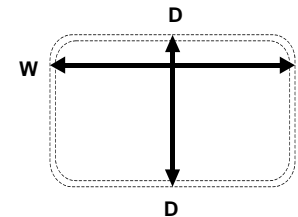
- S/L SPRING** Self Lock Spring
- C/T SPRING** Constant Tension Spring with Centre Pull
- D/P SPRING** Constant Tension Spring with Double Pulley Bottom Rail
- L/H CLUTCH** Left Hand Chain Operated Clutch
- R/H CLUTCH** Right Hand Chain Operated Clutch
- ELECTRIC** Mains Power or Low Voltage Motors

MEASURING INSTRUCTIONS



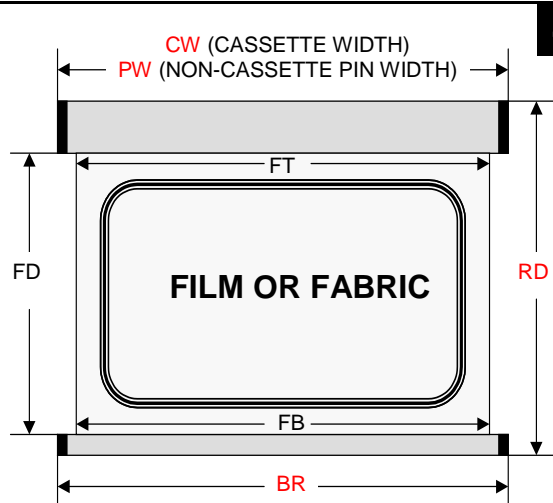
INSIDE RECESS

Carefully measure **width 'A'** at 2 points. This will identify the recess and window shape e.g. Square / Rectangular or Tapered. Then carefully measure the Recess Drop 'B' which is also the Blind Drop. Solar Solve Marine will **deduct 6mm from the INSIDE Recess Width given**, to obtain the Blind Width and ensure the blind/screen will fit perfectly.



OUTSIDE RECESS

Decide where the blind/screen is to be installed and carefully measure **width 'W'** and **drop 'D'**. Give the dimension 'W' as the **OUTSIDE Recess WIDTH** dimension (PW or CW) and the dimension 'D' as the **DROP RD.**

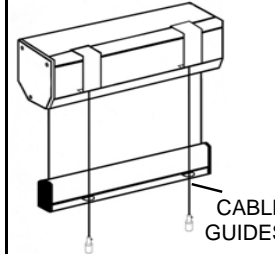


FILM COLOURS AVAILABLE

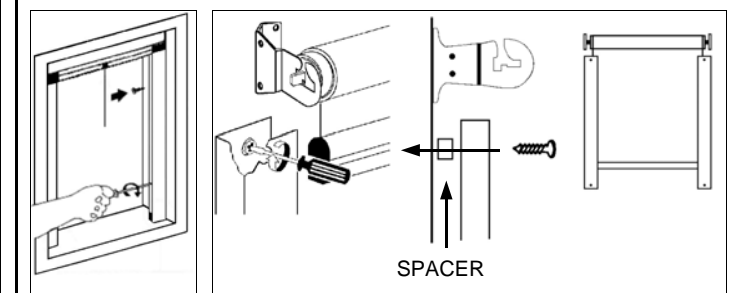
Name	INSide	OUTSide
GOLD	Grey	Gold
SILVER	Grey	Silver
GREY	Grey	Grey
BRONZE	Bronze	Bronze

FT = Film/Fabric Top Width (CW or PW less 37mm)
FB = Film/Fabric Bottom Width (BR less 37mm)
FD = Film/Fabric Drop
BR = Bottom Rail Width
RD = Required Drop

CABLE SUPPORT SYSTEM



COMPLETED CABLE SYSTEM AS SEEN FROM BEHIND SCREEN



SIDE GUIDE CHANNELS

7